

# Tissue Sample Unit (TSU) Guidelines



TSU vials should be stored at room temperature prior to use (for a maximum period of 12 months). Care should be taken not to expose the unused product to extremes of heat or cold prior to sampling.



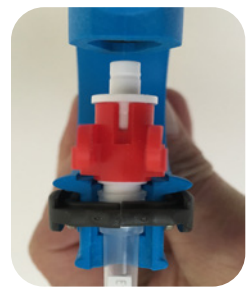
1. Take an assembled TSU (cutter + connection piece + collection vial)



2. Squeeze the two spring loaded retainer clips together



2a. And insert the TSU as shown in the picture



2b. After insertion of the TSU release the spring loaded clips to lock in the vial



2c. Carefully squeeze the applicator handles until the large piston comes to a stop against the red connection piece



3. You have now completely seated the cutter. After the cutter is seated into the piston you can release the handles



4. You can now easily remove the red connection piece while holding the two red tabs and pushing sideways



5. The applicator is now loaded and ready for use. At first this loading & seating action may seem long but with experience this should only take a couple of seconds

Take care not to cut fingers on the metal cutter. It is very sharp!

# Taking an ear notch sample



1a. Slide the loaded applicator over the ear and position the cutter about 1cm to 2cm from the edge of the ear.



1b. Try to avoid large veins and ridges. The sample should be taken in a very swift, fluid motion.



2a. Remove the TSU vial from the applicator by squeezing the two spring loaded clips together, then slide out the tube.

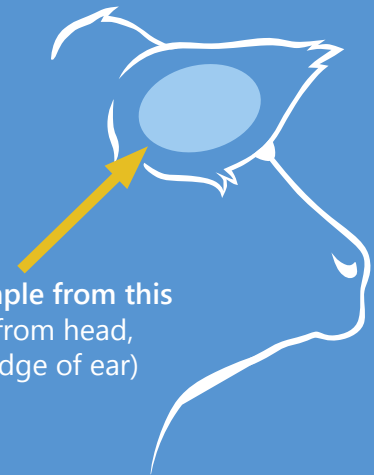


2b. A tissue sample should be clearly visible inside the vial.

We recommend samples be taken from the back of the ear rather than the front to minimise the amount of hair which can prevent the TSU from sealing correctly.

Samples can be taken from anywhere in the highlighted area, try to find a spot as free from hair as possible and not near a vein.

Be sure to check the TSU vial after sampling to ensure the cap has sealed properly to avoid buffer leaking.



Extract sample from this area. (3cm from head, 6cm from edge of ear)



3. Remove the used cutter from the applicator by pushing the handles apart. This will loosen the cutter and make it easy to remove. You cannot reuse the cutter as it has no red plunger.



The TSU is for **SINGLE USE** only, both the vials and the cutters can't be re-used! See the difference between an unused and a used TSU.



In the used TSU a visible **RED** plunger will be indicating the tube already contains a sample and can't be used again.



**CAUTION:** The cutter is very sharp. Mind your fingers!

Once the tissue sample has been extracted, care should be taken to store the product at room temperature or in a refrigerator. The best results are obtained when the samples are analysed within one year after the sample collection. Long term storage should be managed by your genetics lab partner.

## Find out more information

06 323 4484

[pbbnz.com](http://pbbnz.com)

[dna@pbbnz.com](mailto:dna@pbbnz.com)

