

Send to: _____

AHB Herd Number: _____ PIN: _____



OFFICIAL TAG ORDER FORM

Charge through (Reseller): _____

Order Number: _____

AHB ECONOMY PACKAGE

Valid until 30 June 2012 (cattle)

All tags are yellow
Male tags are blank

- Complies with the AHB requirement.
- Allows full movement until 30 June 2012 (cattle).
- Allows animals to go to sale or the works.
- Laser marking only.

Primary Medium/button

Secondary Button/button

Quantity required

Year code (if required)

Start no. (if required)

Range (ie. 1-100, etc)

PRIMARY TAGS valid until 30 June 2012 (cattle)

Maxi, Large and Medium tags LaserPlus only.

SIZE OPTION
(Tick one only)

A
MEDIUM FEMALE
BUTTON MALE

B
DOUBLE
MEDIUM

C
LARGE FEMALE
BUTTON MALE

D
DOUBLE
LARGE

E
LARGE FEMALE
MEDIUM MALE

F
MAXI FEMALE
BUTTON MALE

G
MAXI FEMALE
LARGE MALE

I
DOUBLE MAXI

NOTE: Button tags have limited space for marking

FRONT

Quantity required

Number range (ie. 1-100, etc)

Replacement Year code (if required)

Duplicate

Primary front tags are available in Yellow only

BACK

TAG MARKING

Same Animal Number

Blank

Text

Custom No.

FARM NAME

TAG COLOUR

Yellow Orange

Red Pink White Green

Blue Purple Black Brown

SECONDARY TAGS

Maxi, Large and Medium tags LaserPlus only.

SIZE OPTION
(Tick one only)

A
MEDIUM FEMALE
BUTTON MALE

B
DOUBLE
MEDIUM

C
LARGE FEMALE
BUTTON MALE

D
DOUBLE
LARGE

E
LARGE FEMALE
MEDIUM MALE

F
MAXI FEMALE
BUTTON MALE

G
MAXI FEMALE
LARGE MALE

H
DOUBLE
BUTTON

I
DOUBLE
MAXI

J
EID DOUBLE
BUTTON
(white only available)

FRONT

Quantity required

Animal No. Custom No.

FARM NAME

TAG COLOUR

Yellow Orange

Red Pink White Green

Blue Purple Brown

BACK

TAG MARKING

Same Animal Number

Blank

Text

Custom No.

FARM NAME

TAG COLOUR

Yellow Orange

Red Pink White Green

Blue Purple Black Brown

NAIT PRIMARY TAGS

AHB approved, NAIT compliant.
White only.

Tag Technology (tick one)

HDX - High performance (dairy)

FDX - Low cost (beef)

Note: Defaults to FDX

Quantity required

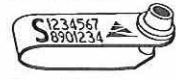
Year code (if required)

Range (ie. 1-100, etc)

NOTES

e.g. custom number range or applicators required

DIRECT TO SLAUGHTER TAGS valid until 30 June 2012 (cattle)



QUANTITY REQUIRED

OFFICIAL MARKING All markings on the Slaughter tag are determined by the Animal Health Board. Available in Yellow only.

CAUTION This is a new order form that reflects the recent changes to the AHB Scheme and official ordering website. AHB approved EID Secondary devices available from June 2009, they are NAIT compliant and only available in white. Management numbers on all Maxi, Large and Medium tags only are LaserPlus marked only except Economy Package.