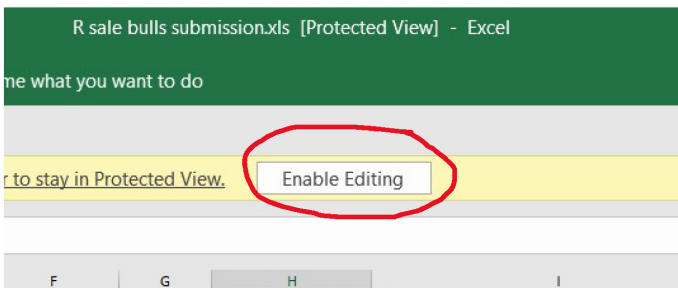
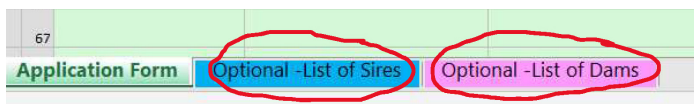


DNA application form tip sheet

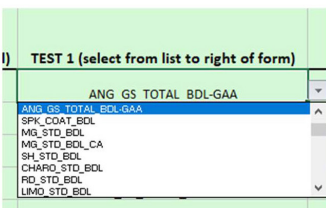
1. Make sure the click 'enable edit' at the top of the screen.



2. You do not have to write the sire and dam next to each animal. Say you used 10 sires in total you can list these 10 potential sires on the blue 'Optional - List of Sires'. the same applies to the ?????



3. If you are testing a large group of animals all from the same year group then we can extract these animals rego numbers as well as their recorded sires and dams out of the system to save you time and typing. Just flick us an email or call to ask.
4. To fill out the test required click the drop down arrow under test 1.



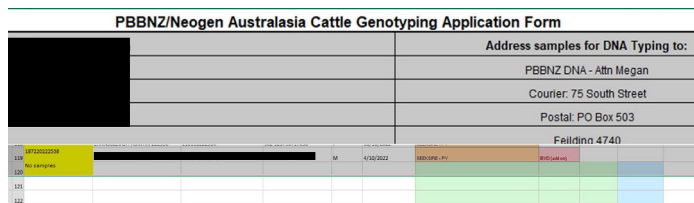
5. To the right of the form, next to the Dam Rego column is the list of tests detailing what each test included. The DNA flyers on the PBB website also outlines each test available.

DAM REGO / IDENT		
Test Code	Description	
SIM_STD_BDL	Simmental Bundle - 100K profile, PV, horn/poll test, coat colour, dilutor, tenderness	
HFD_STD_BDL	Hereford Bundle - 100K profile, parentage, genetic conditions (Hyp, DLIE, MSUD), horn/poll test, tenderness	
ANG_GS_TOTAL_BDL-GAA	Angus GS Total Bundle - AngusGS79K profile, parentage, NH & DD, AM & CA and mannosidosis	
SPK_COAT_BDL	Speckle Park Coat Bundle includes all SPI compulsory tests - 100K profile, parentage, horn/poll, coat colour, microsat, leg	

6. The animals rego number MUST be correct in order for the iLR2 or Helical system to pick up the DNA results and load them against the animal. If the rego number is incorrect/has a typo then the DNA results won't be automatically picked up and this will have to be done manually. Therefore it pays to double check all regos before submitting (although PBB go through and check).

Printing out the application form

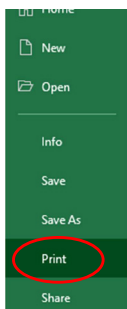
1. Click and hold the left mouse button, and drag down from the top row to the last row you have fill out:



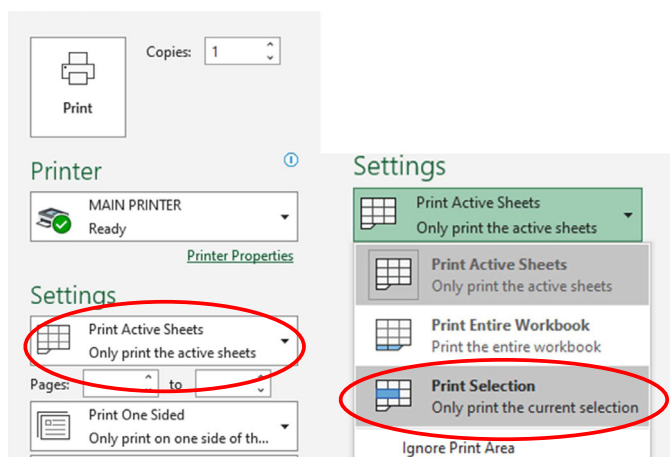
2. Go to file.



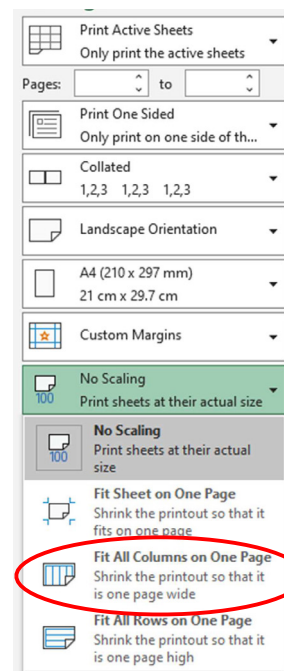
3. Click on print.



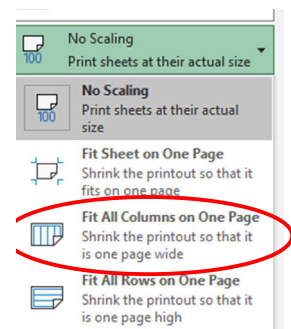
4. Under settings, click the first drop down box, and choose print selection.



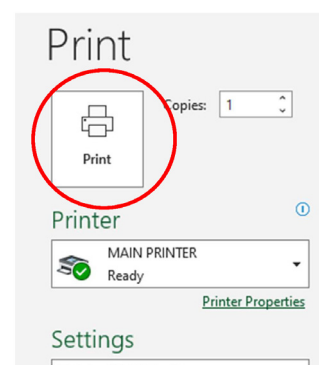
5. Ensure orientation is set to landscape.



6. In the last drop down box, change scaling to 'fit all columns' on 'one page'.



7. Then click print.



8. Include printed out copy with samples when you send them. Make sure to email a digital copy to dna@pbbnz.com in excel format.